

# MIU (Multi Information processing Unit) LiveViewer 3 Application User's Manual

Hitachi Ltd.

## NOTE

- *The manufacturer assumes no responsibility for any errors that may appear in this manual.*
- *The reproduction, transfer or copy of all or any part of this document is not permitted without express written consent.*

## Trademark acknowledgment

- *Windows is a registered trademark of Microsoft Corporation.*
- *All other trademarks are the properties of their respective owners*

## Caution

The Software is being delivered to you "AS IS" and Hitachi makes no warranty as to its use or performance. HITACHI AND ITS SUPPLIERS, INCLUDING BUT NOT LIMITED TO HITACHI, LTD., DO NOT AND CANNOT WARRANT THE PERFORMANCE OR RESULTS YOU MAY OBTAIN BY USING THE SOFTWARE. EXCEPT TO THE EXTENT PROHIBITED BY LAW IN YOUR JURISDICTION, HITACHI AND ITS SUPPLIERS MAKE NO WARRANTIES CONDITIONS, REPRESENTATIONS, OR TERMS (EXPRESS OR IMPLIED WHETHER BY STATUTE, COMMON LAW, CUSTOM, USAGE OR OTHERWISE) AS TO ANY MATTER IN CONNECTION WITH THE SOFTWARE, INCLUDING WITHOUT LIMITATION NONINFRINGEMENT OF THIRD PARTY RIGHTS, MERCHANTABILITY, INTEGRATION, SATISFACTORY QUALITY, OR FITNESS FOR ANY PARTICULAR PURPOSE.

You agree that the Software will not be shipped, transferred or exported into any country or used in any manner prohibited by the United States Export Administration Act or any other applicable export laws, restrictions or regulations (collectively the "Export Laws"). In addition, if the Software is identified as export controlled items under the Export Laws, you represent and warrant that you are not a citizen, or otherwise located within, an embargoed nation (including without limitation Iran, Iraq, Syria, Sudan, Libya, Cuba, North Korea, and Serbia) and that you are not otherwise prohibited under the Export Laws from receiving the Software. All rights to Use the Software are granted on condition that such rights are forfeited if you fail to comply with the terms of this Agreement.

# Contents

1	Overview	3
1.1	Quick and Easy Connection	3
1.2	Live Mode	3
1.3	Compatibility	4
1.3.1	Minimum PC hardware and software requirements	4
1.3.2	Software versions	4
2	Starting with LiveViewer	5
2.1	Install LiveViewer	5
2.1.1	Software Installation	6
2.2	Connect to the network	7
2.2.1	Launch LiveViewer	7
2.2.2	Select network adaptor	7
2.2.3	Configure network parameters	8
2.2.4	Passcode (For Projector models CP-X308, CP-X417, CP-X807 and CP-X809)	9
2.2.5	Configure Manually option	10
2.2.6	Manual Configuration	11
2.3	Select the projector	13
2.3.1	Connection and transmission	13
2.3.2	Connection error	13
2.4	Live Mode Outline	14
2.4.1	Setting the Live Mode	14
2.4.2	Display Mode	14
2.4.3	Presenter mode (for Projector models CP-X308, CP-X417, CP-X807 and CP-X809)	15
2.4.4	Display User Name (for Projector models CP-X308, CP-X417, CP-X807 and CP-X809)	15
3	Start the “LiveViewer 3”	16
3.1	Main menus and operating buttons	16
3.1.1	Menu Type	16
3.1.2	Menu button	16
3.1.3	Status	17
3.1.4	Multi PC display mode	18
3.1.5	Optional settings	18
3.2	Profile data	19
3.2.1	Profile data outline	19
3.2.2	Create Profile data	19
3.2.3	Edit Profile	20
3.2.4	My Connection	20
	Appendix	21

# 1 Overview

Hitachi's wireless presentation software LiveViewer and wireless projector give you "cable free" presentation environment.

## 1.1 Quick and Easy Connection

LiveViewer version 3 provides several methods for connecting to your network projector quickly and easily.

### 1. Quick connection via Passcode (For models, CP-X308, CP-X417, CP-X807, CP-X809 only)

The projector will display a Passcode which contains relevant configuration information (SSID, IP address, etc...) required for connecting to your networked projector. Entering the Passcode into the LiveViewer software on your PC allows for easy one step configuration and connection.

### 2. Quick Connection via Profile

You can set and save configuration information for connecting to your network projector as a Profile in LiveViewer. Once created, this allows for an easy one step connection by selecting a Profile from the LiveViewer software.

### 3. Quick Connection via History

LiveViewer saves a History of your previous connections. Once established, this will allow for an easy one step connection by selecting from the History listing in LiveViewer.

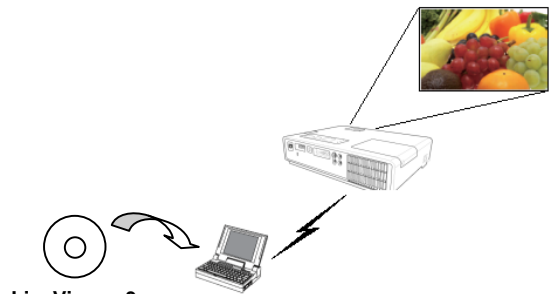


Fig. 1.a PASSCODE on the projector screen

## 1.2 Live Mode

Live Mode is one of LiveViewer's working modes designed to displays images from your computer onto the projector in a "live" fashion. LiveViewer can capture and sends images to the projector either wired or wirelessly. In order to do this, you must first install the LiveViewer software onto your computer.

The network projector has built-in MIU (Multi Information processing Unit) module that can handle up to 4 LiveViewer sessions simultaneously.



LiveViewer 3

Fig. 1.b LiveViewer displaying through a projector via Adhoc / Peer-to-Peer wireless LAN connection

## 1.3 Compatibility

### 1.3.1 Minimum PC hardware and software requirements

OS	Windows 2000 Professional (Service Pack4) Windows XP Home Edition Windows XP Professional Windows Vista Home Basic (32bit) Windows Vista Home Premium (32bit) Windows Vista Business (32bit) Windows Vista Enterprise (32bit) Windows Vista Ultimate (32bit)
Display	VGA 640x480 or higher (XGA 1024x768 recommended) 65,536 simultaneous colors or higher
Available Hard Disk Space	20MB or higher
Web browser	Internet Explorer® (5.5 or higher)
CD-ROM drive	
Wireless	IEEE802.11b/g

### 1.3.2 Software versions

To use the ‘Live Mode’, it is required that you install the “Live Viewer” software into the PC that is going to be connected to the projector through the network. The correct software version depends upon the projector model that you have. If the version is not matched with the projector, the software will not work properly.

Live Viewer Version	Model			
	CP-X267	CP-X268A CP-X608	CPX2	CP-X308 CP-X417 CP-X807 CP-X809
2.01	✓	-	-	-
2.1x	-	✓	✓	-
2.2x	-	✓	✓	-
3.xx	-	✓	✓	✓

“x” in the version means 0 or greater.

Please check and get the latest version at Hitachi Web site.

<http://hitachi.us/digitalmedia> or <http://www.hitachidigitalmedia.com>

## 2 Starting with LiveViewer

The section explains the process of using the projector in the Live Mode. The outline of the process is as follows.

### STEP 1. Install the LiveViewer application (📖 5)

### STEP 2. Connect to the network (📖 7)

The Quick Connection feature prepares some options for connecting to your network projector. You can select one that meets your requirements.

- Passcode connection
  - Profile data connection
  - History record connection
  - My Connection
- Manual connection

### STEP 3. Select the projector (📖 13)

In some case, there are several projectors connected to the same network. Before you send your image, confirm that the right projector is selected.

### STEP 4. Start Live Mode (📖 14)

The LiveViewer main menu will be on screen. Now, you can send your images to the projector through the network.



Fig. 2.a LiveViewer Main menu

## 2.1 Install LiveViewer

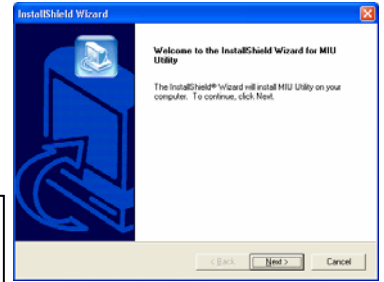
In order to use the Live Mode and Quick Connection, you first need to install the enclosed software, “LiveViewer 3”, onto all PCs that you want to connect to your network projector.

#### NOTE

- Set your PC resolution to XGA or less. Refer to the user manual for your PC or Windows.
- In some cases, your PC screen may not display correctly by the projector. If the PC's resolution is larger than 1024x768, the projector will only display the 1024x768 portion of the image.
- Improper OS version or driver software for Network Adaptor on your PC may prevent images from being transmitted correctly. It is highly recommended that you check for OS and driver updates.
- Depending on the type of wireless network device and PC you are using, the projector may not be able to communicate properly with your PC, even if the PC you are using is equipped with built-in wireless LAN functionality. If communication problems occur, please use a Wi-Fi certified wireless network device.
- In case you use Live Viewer 3 in Windows Vista, Aero Glass cannot be used while the PC image is displayed.
- The Screen Image of Slide Show in Windows Vista cannot be sent to the projector.
- When installing Live Viewer 3 in Windows Vista, UAC (User Account Control) warning message is displayed.
- In the case you use WPA-PSK/WPA2-PSK in Windows 2000, first set up your network using the utility for wireless adaptor in your PC and perform network connection between projector and PC before starting Live Viewer 3.
- Your PC needs to meet the minimum hardware requirement of your OS.

## 2.1.1 Software Installation

1. Turn on the PC
2. Shut down all other applications
3. Insert the accompanying CD-ROM into the PC's CD-ROM drive
4. After a moment, the Welcome to MIU Utilities Setup dialog will appear as shown on the right. Press [Next].

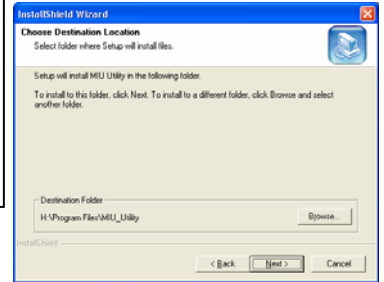


### NOTE

- If the Welcome to MIU Utilities Setup dialog doesn't appear, proceed as follows:
  - (1) Click on the [Start] button in the toolbar and select "Run".
  - (2) Enter E:\software\setup.exe and then press [OK].

↖ If your CD-ROM drive is not drive E on your PC, you will need to replace E with the correct drive letter assigned to your CD-ROM drive.
- If the software has been previously installed, Un-installation will be done. Click the [Cancel] button, the un-installation will be canceled. If you uninstalled the software by miss-operation, please re-install the software from first steps.

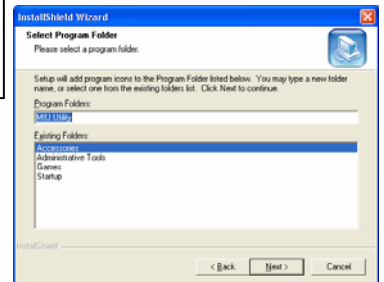
5. The License Agreement dialog appears. If you accept it, press [Yes]
6. The Choose Destination Location dialog appears. Press [Next].



### NOTE

- A 'C:\Program Files\Live Viewer 3' folder will be created and the program will be installed into that folder. If you wish to install to a different folder, click [Browse] and select another folder.

7. Confirm the program folder name. If LiveViewer is okay, press [Next] to continue. If not, enter the desired folder name and then press [Next].
8. The Hardware Installation dialog appears. Press Continue.
9. After a moment, installation will complete and the Setup Complete dialog will appear as shown on the right. Click [Finish]. This completes the software installation.

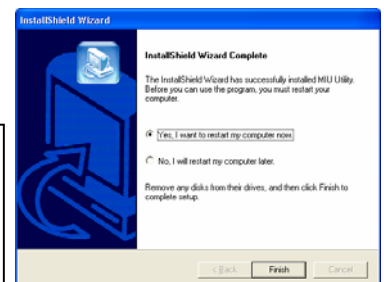


You will then be prompted to restart your PC.

- ✓ To confirm that the software as been properly installed, press the [Start] button on the toolbar, select All Programs and then select the LiveViewer 3 folder.
- ✓ LiveViewer will appear in that folder if the installation was successful.

### NOTE

- After sequence 3, User Account Control (UAC) dialog will appear if you are using Windows Vista. Please click [Allow] to continue installation.
- After sequence 8, Windows Security dialog will appear if you are using Windows Vista. Please click the [Install this driver software anyway] and continue installation.



## **2.2 Connect to t**

Live Mode provides s  
to your system and ne

### **2.2.1 Launch Live**

To Start LiveViewer s

- Double click the
- Select “START”

Then, proceed to the ‘

**NOTE**

## 2.2.2.2 Selecting the

Select “My Connection” when the PC is connected to the network. Select the profile data that is pre-assigned to the Connection, the PC in the network. Proceed to the item “2

### NOTE

- *If DHCP is set in the profile data, the connection may not be established. If the profile data is not set, the connection is not established.*
- *If no profile data is set, the connection is not established.*

## 2.2.3 Configure n



## 2.2.4 Passcode (For Projector models CP-X308, CP-X417, CP-X807 and CP-X809)

The unique Passcode system brings you a very quick and simple method for connecting to your network projector. The Passcode is a code that contains the network settings of the projector. When you input the Passcode in the LiveViewer software on your PC, the network settings of the projector and PC are matched and the connection will be established immediately. The section is intended to explain how to use the Passcode.

### 2.2.4.1 Getting the Passcode

The Passcode is 12-digit code consisting of alphanumeric characters (“1-9” and “A-Z”). The Passcode is displayed on the projector screen.

#### Example: Passcode 1234-5678-9ABC

There are two methods to get the Passcode from the projector

##### ➤ Method 1

- ✓ Turn on the projector, and make sure that the projector image is displayed on screen.
- ✓ Press the MENU button on the remote control or the ▲/▼/◀/▶ buttons on the projector to show the on screen menu.
- ✓ Use the ▲/▼ cursor buttons to select the Advanced Menu, and use the ▶ cursor button to enter.
- ✓ Use the ▲/▼ cursor buttons to select MIU, and use the ▶ cursor button to enter.
- ✓ Use the ▲/▼ cursor buttons to select LIVE MODE, and push the ▶ cursor button.
- ✓ The Passcode will appear on the screen.

##### ➤ Method 2

- ✓ Turn on the projector, and make sure that the projector image is displayed on screen.
- ✓ Press the MENU button on the remote control or the ▲/▼/◀/▶ buttons on the projector to show the on screen menu.
- ✓ Use the ▲/▼ cursor buttons to select the Advanced Menu, and use the ▶ cursor button to enter.
- ✓ Use the ▲/▼ cursor buttons to select MIU, and use the ▶ cursor button to enter.
- ✓ Use the ▲/▼ cursor buttons to select the INFORMATION, and use the ▶ cursor button to display the INFORMATION.
- ✓ The Passcode appears at the top right corner in the INFORMATION window.

#### NOTE

- *To obtain the settings of the network projector, please use the following procedure.*
  - ✓ *Turn on the projector, and make sure that the projector image is displayed on screen.*
  - ✓ *Press the MENU button on the remote control or the ▲/▼/◀/▶ buttons on the projector to show the menu on screen.*
  - ✓ *Use the ▲/▼ cursor buttons to select the Advanced Menu, and use the ▶ cursor button to enter.*
  - ✓ *Use the ▲/▼ cursor buttons to select the MIU, and use the ▶ cursor button to enter.*
  - ✓ *Use the ▲/▼ cursor buttons to select the INFORMATION, and push the ▶ cursor button.*
  - ✓ *The setting will be displayed in the MIU-INFORMATION box.*

## NOTE

- *The Passcode system must be configured manually.*
  - 1) *An encryption key must be generated. The Passcode system will use this key to encrypt and decrypt the data.*
  - 2) *Unique SSL certificates must be generated for each device. The Passcode system will use these certificates to authenticate the devices.*
  - 3) *Subnet masks must be configured for each device. The Passcode system will use these subnet masks to determine the network topology.*
- *Use Method 2, which uses a secure signal.*
- *If there is no communication between the devices, the Passcode system will not be able to function.*

## 2.2.5.2 History conn

Select History data to store the History data

- ✓ Select the [His
- ✓ Click [Connect
- ✓ Proceed to the

### NOTE

- *To check the setti*
  - ✓ *Choose a pr*
  - ✓ *Move the m*
  - ✓ *Click "D*

## 2.2.6.2 The projector c

- ✓ Settings of th  
information.

**SSID:**

**Encryption:**

**Encryption**

- ✓ The setting fr

- ✓ Enter the foll

**Subnet mas**

- ✓ Click [Conn

## 2.2.6.4 The projector o LAN

✓ Enter the foll

**SSID<sup>\*2</sup>:**

**Encryption**

**Encryption**

**Subnet mas**

✓ 2) Click [Cor

✓ The wireless

✓ Proceed to th

## 2.4 Live Mode Outline

Live Mode can display your PC's image on screen in real time through either a wired or wireless LAN connection. So, no signal cable connection is required.

### 2.4.1 Setting the Live Mode

This section is intended to explain how to switch to Live Mode in the MIU menu of the projector, either by using the remote control or web browser software.

#### From Web Remote Control on a web browser:

- ✓ Click the [LIVE MODE] button

#### From the OSD menu, by using the remote control or keypad of the projector:

- ✓ Turn on the projector, and make sure that the projector image is displayed on screen.
- ✓ Press the MENU button on the remote control or the ▲/▼/◀/▶ buttons on the projector to show the menu on screen.
- ✓ Use the ▲/▼ cursor buttons to select the Advanced Menu, and use the ▶ cursor button or ENTER button to enter the item.
- ✓ Use the ▲/▼ cursor buttons to select MIU, and use the ▶ cursor button or ENTER button.
- ✓ Use the ▲/▼ cursor buttons to select the LIVE MODE, and push the ▶ cursor button or ENTER button.

#### From My Button function:

- ✓ Turn on the projector, and make sure that the projector image is displayed on screen.
- ✓ Press the MENU button on the remote control or the ▲/▼/◀/▶ buttons on the projector to show the menu on screen.
- ✓ Use the ▲/▼ cursor buttons to select the Advanced Menu, and use the ▶ cursor button or ENTER button to enter the item.
- ✓ Use the ▲/▼ cursor buttons to select the OPTION, and use the ▶ cursor button or ENTER button.
- ✓ Use the ▲/▼ cursor buttons to select the MY BUTTON Menu, and use the ▶ cursor button or ENTER button to enter the item.
- ✓ Choose 1 or 2 on the MY BUTTON menu using the ◀/▶ cursor buttons. Then using the ▲/▼ buttons sets LIVE MODE function to the button.

### 2.4.2 Display Mode

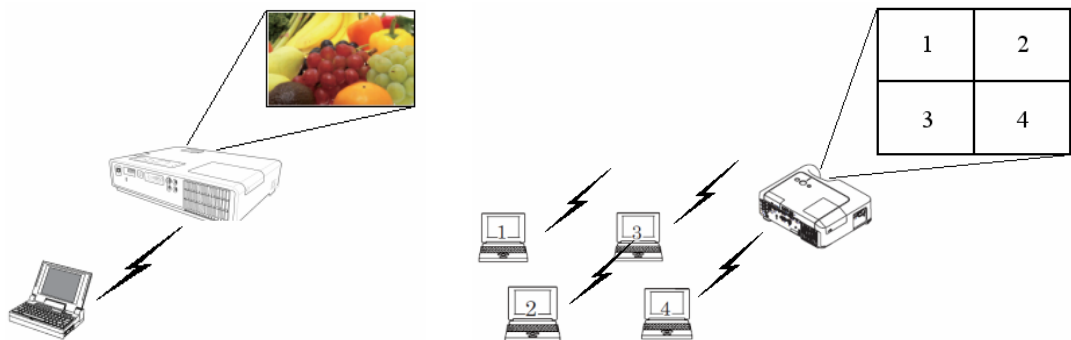
In the Live Mode, there are two display modes, Single PC mode and Multi PC mode.

#### ➤ Single PC mode

The projector displays images sent by one PC.

#### ➤ Multi PC mode

The projector screen is divided to 4 zones. The projector displays images of an individual PC in each zone, allowing the projector to display images of up to 4 PCs at the same time.



### **2.4.3 Presenter mode (for Projector models CP-X308, CP-X417, CP-X807 and CP-X809)**

In the Single PC mode, the projector can be occupied by one PC and can block access from any other PC (if Presenter mode is set to On in LiveViewer). While making your presentation, you don't need to worry that the image on screen will be unexpectedly switched to an image sent by another PC. Presenter mode can be set to On in the Option menu in the LiveViewer Main menu.

### **2.4.4 Display User Name (for Projector models CP-X308, CP-X417, CP-X807 and CP-X809)**

A User Name can be set in LiveViewer, which will be displayed on screen while presenting. This makes it easy to keep track of whose image is currently displayed on screen.

### 3 Start the “LiveViewer 3”

Once you have established a connection between your network projector and PC, the Live Viewer main menu will be shown on the PC screen. From the main menu you can configure settings and operate the functions needed to send images to the projector in Live mode.

#### 3.1 Main menus and operating buttons

##### 3.1.1 Menu Type

Live Viewer has 2 types has an Easy and Advanced menus, When Live Viewer is started, the last used type will be shown. When the network connection is not established, the Advanced menu will be shown.

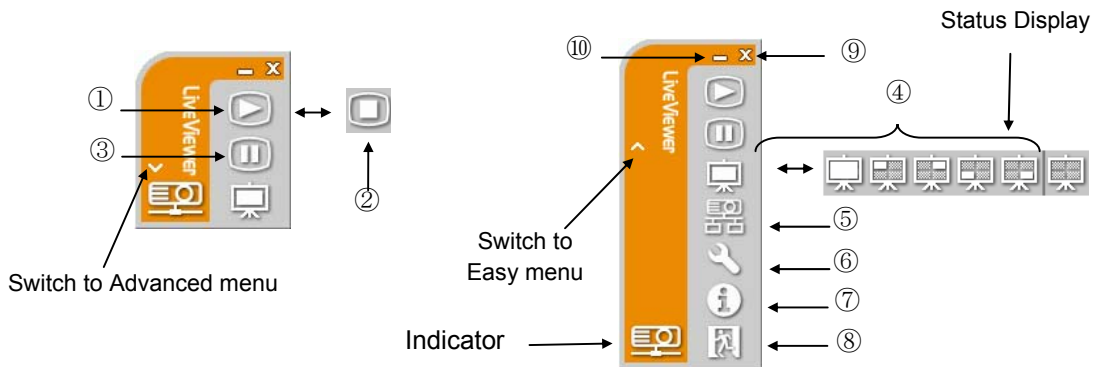


Fig. 3.a LiveViewer 3 Main Menu (Easy Menu / Advanced Menu)

##### 3.1.2 Menu button

###### ① Start Capture button

The transmission to the network projector is started and images will be displayed in Live mode. The initial Display mode is Single PC mode. After that, the last Displayed mode will be applied.

###### ② Stop Capture button

The transmitted image is stopped.

###### NOTE

- Images may not be displayed on screen, if the Start/Stop buttons are clicked repeatedly.

###### ③ Hold button

The image on screen is temporarily frozen. The last image before the button is clicked remains on screen. This allows you to change the image data on your PC without showing it on the projector’s screen.

###### ④ Display mode button (Ⓜxx)

It allows you to switch between Single PC mode and Multi PC mode.

###### ⑤ Connect button

The screen to select the connection mode is displayed. Go to the item 3.3.3(Ⓜxx)

###### ⑥ Option button

The option screen is displayed.

###### ⑦ Information button



The version of the Live Viewer is displayed.

**⑧,⑨ Close button**

The network is disconnected and Live Viewer is closed.

**⑩ Minimize button**

The main menu is closed, and Live Viewer icon is displayed on the task tray in your PC.

Double-click the icon in the task try to re-launch the main menu.

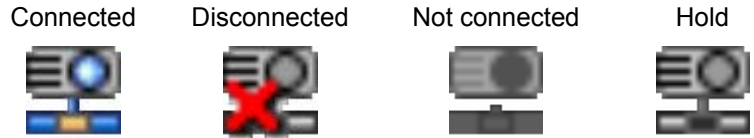


Fig. 3.b Task tray Icon

**3.1.3 Status**

**3.1.3.1 Indicator**

The indicator shows the following status.

Indicator	Status	Note
	Not connected	The network connection to the projector is not established yet.
	Hold	The network connection is established, but the image transmission is on hold.
	Connected	The network connection is established and the images on the PC are being sent to the projector. The indicator is blinks while the connection is in progress.
	Disconnected	The network connection to the projector is disconnected.

**3.1.3.2 Status Display in Multi PC mode**

An icon is displayed at the right end of the Display mode buttons, when the Multi PC mode is selected. One of the following icons are designed to inform you how many and which of the quarter screens are in use.


Status	Status icon
No PC is on screen	
One PC is on screen.	
Two PCs are on screen.	
Three PCs are on screen.	
Four PCs are on screen.	

**NOTE**

- The status display is refreshed in every 3 seconds.
- If status cannot be gotten from the projector, it will not be displayed.

### 3.1.4 Multi PC display mode

Live Viewer has both Single PC mode and Multi PC display modes. These modes can be switched from the main menu.


✓ Click the  button on the main menu. The buttons below are displayed.

✓ Select from ① to ⑤ buttons, and click it.

① Single PC mode: Your image is displayed full screen.

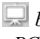
②-⑤ Multi PC mode: Your image is displayed on a quarter screen as identified by the icon

✓ The projector screen is switched to the mode selected above, and your PC image will be displayed on the screen.

✓ The icon  on the main menu is replaced by the icon you selected.



#### NOTE

- *Image transmission is stopped when:*
  - you click the Single mode button while the projector is in the Single PC mode or
  - you click one of the Multi mode buttons while the projector is in the Multi PC mode
- When Multi PC mode is selected, the projector screen is automatically divided to 4 zones.
- When the Presenter mode is set in the Single PC mode, the  button cannot be clicked by other PCs.
- If the quarter screen that displays images sent from another PC is selected, that PC network projector connection is disconnected.

### 3.1.5 Optional settings

Clicking the Option button displays the option menu on screen.

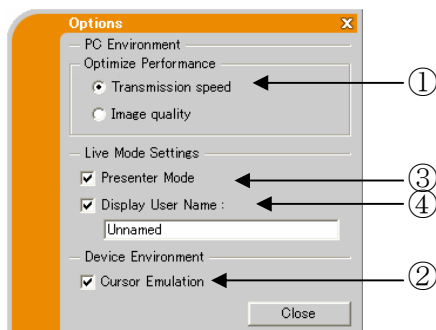


Fig. 3.d Option Menu (A)

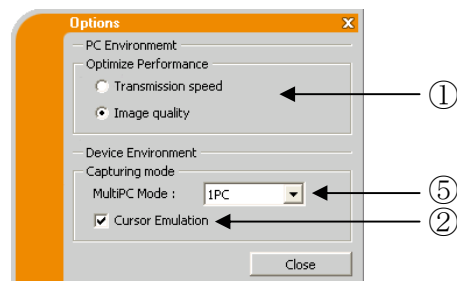


Fig. 3.d Option Menu (B)

#### ① Optimize Performance

Live Viewer captures PC screen in JPEG mode and send the JPEG data to the projector. Live Viewer has two options that have different compression rate of JPEG data.

**Transmission speed:** Speed takes priority over Image quality. JPEG compression rate is higher. The displayed image on the projector is rewritten quicker because the transferred data is more compressed, but the image quality is lessened.

**Image Quality:** Image quality takes priority over Speed. JPEG compression rate is lower. The displayed image on the projector is rewritten slower because the transferred data is larger, but the image quality is better.

#### ② Cursor Emulation

If the mouse cursor (pointer) on your PC screen is not displayed on the projector screen, check the Cursor Emulation box. “Live Viewer3” helps you to find the cursor on the screen.

### ③ Presenter Mode

In Single PC mode, the projector can be occupied by one PC and can block access from any other PC, if the Presenter mode is set to 'On' in "Live Viewer 3". While making your presentation, you don't need to worry that the image on screen will be unexpectedly switched to an image sent by another PC. If you want to use Presenter Mode, put a check mark in the check box.

#### NOTE

- When Multi PC mode is selected, the setting for the Presenter mode is invalid.
- When switching from Multi PC mode to Single PC mode, Presenter mode setting of the PC is valid.
- The default setting is 'On'.

### ④ Display User Name

A user name (up to 20 letters) can be input by using alphanumeric characters. The user name can be displayed on the projector screen, so it's easy to tell whose image is currently on the screen. If the check box is not selected, the information is not sent to the projector.

### ⑤ Multi PC Mode

Select the number of PC's you would like to connect to the projector (quantity 1PC to 4PCs).

## 3.2 Profile data

### 3.2.1 Profile data outline

Settings to connect the network projector and PC can be stored as 'Profile' data. Once the data is stored, all you need to do is to select the 'Profile' to connect to the network projector. This is recommended when the same network connection is used often.

### 3.2.2 Create Profile data

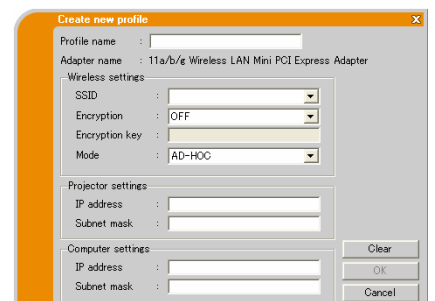
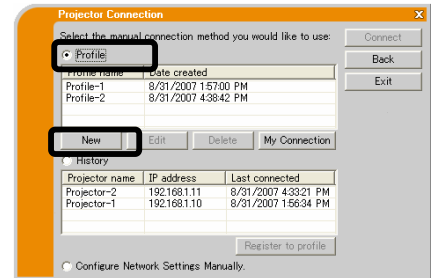
Profile data is made from the Manual Configuration screen. Up to 10 sets of Profile data can be stored for each network adaptor.

- ✓ Select [Profile] and click [New].
- ✓ "Create new profile" will appear. If you have already made 10 sets of Profile data, you cannot make a new one, until you have deleted stored data. Input all information required for your network connection. If you want to clear the information you have input, click [Clear].
- ✓ Click [OK], after all information is set. If you don't want to save, click [Cancel].
- ✓ The new Profile data is shown in the Profile list, once you click [OK].

Profile data can be stored after making a network projector connection. Check the "Save Connection to Profile list" and click [Yes]. The data will be stored and shown in the Profile list.

#### NOTE

- When you make new Profile data, it is strongly recommended to check that the new Profile works properly by testing the connection.
- If you change a wireless network adaptor, make a new Profile for the adaptor.
- If 10 Profiles already exist, the box cannot be checked
- The profile name for the stored data is assigned by the Live Viewer automatically. The name will be shown at the right side of the check box.



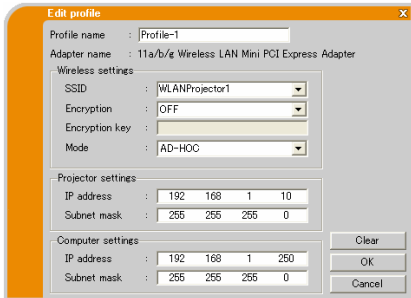
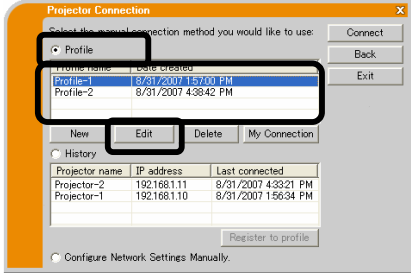
### 3.2.3 Edit Profile

If necessary, the profile data can be edited on the Manual Configuration screen.

- ✓ Select the [Profile], and select one of the data listed in the window.
- ✓ Click the [Edit].
- ✓ The “Edit profile” screen will come up.
- ✓ Edit the information required to be revised. If you want to clear all information in the window, click the [Clear].
- ✓ Click the [OK], after the editing is completed. If you don’t want to store it, click the [Cancel].
- ✓ The edited profile data is stored and shown in the profile list with the new [Date created] information, if you click the [OK].

**NOTE**

- When you edit a profile data, it is strongly recommended to check that the edited data can work properly by selecting the data at the Profile connection.



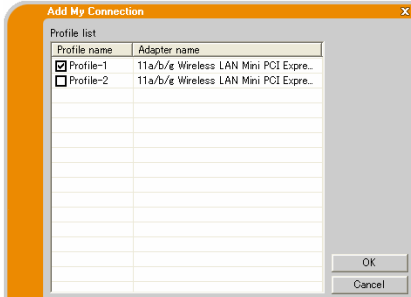
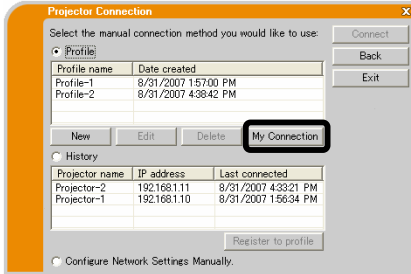
### 3.2.4 My Connection

One of the profile data, which is often used, can be registered as the My Connection profile data. Once the data is registered, all you need to do is to select the My Connection to connect to the network.

- ✓ Click the [My Connection].
- ✓ The “Add My Connection” screen will come up. The currently selected profile data for the My Connection is shown with a check mark in the list.
- ✓ Select one of the profile data listed in the window and put a mark in the check box. The data selected before is turned unmarked.
- ✓ Click the [OK], then the window is closed. If you don’t want to select a new one, click the [Cancel].

**NOTE**

- If you don’t want to use the My Connection, mark no data listed in the window, and click the [OK].
- In the list, all profile data are shown no matter which network adaptor is selected. You can register a profile data that is not for currently selected network adaptor as the My Connection profile data



# Appendix

## A Message

### **Message 1: A network**

This screen is displayed when a LAN cable to your projector is connected (the projector will be returned to the standby mode).

## Message 4: Are you su

This message appears  
use (with another netw

- ✓ To connect, c  
projector". (⏏)
- ✓ Click [No] to

## Message 5: Incorrect I

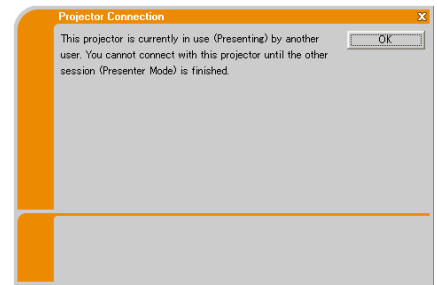
An incorrect Passcode

✓ Click [Reo

**Message 8: The projector is currently in use with another computer.**

The projector you want to display to is occupied by another computer in the Presenter mode.

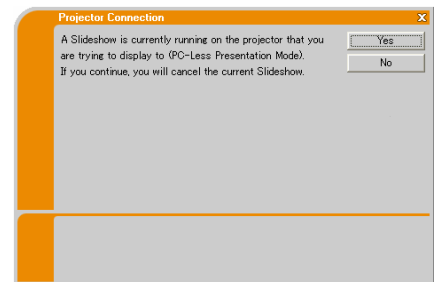
- ✓ Click [OK], then the LiveViewer main menu is displayed in stand-by mode.
- ✓ Once the Presenter has finished, retry to send your images.



**Message 9: A Slideshow is currently running on the projector that you are trying to display to.**

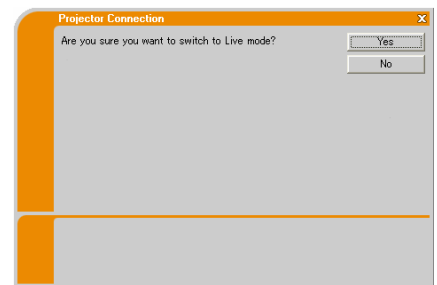
The projector you want to send your images to is in the Slideshow mode (PC-LESS Presentation mode).

- ✓ Click [Yes], then the projector is switched from the Slideshow mode to the Live mode.
- ✓ Click [No], then the projector remains in the Slideshow mode, and the LiveViewer main menu is displayed (Stand-by mode) on your PC.



**Message 10: Are you sure you want to switch to Live mode?**

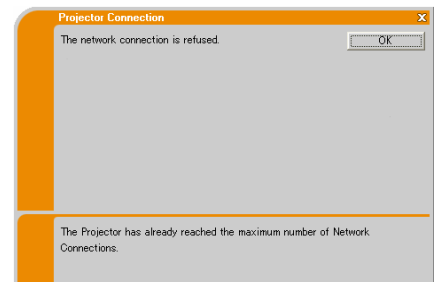
- ✓ · Click [Yes], and the projector is switched to Live mode.
- ✓ · Click [No], and the projector will remain as is, the LiveViewer main menu is displayed in the Stand-by mode on your PC.



**Message 11: The network connection is refused.**

The Projector has already reached the maximum number of Network Connections. The projector can connect up to 5 PCs at the same time.

- ✓ Click [OK], the LiveViewer main menu is displayed.
- ✓ Please retry after disconnecting one of the connected PC's.



## B Trouble Shooting

Problem		Likely Cause	Things to Check	Reference Page Number	
No image		The projector is not turned on.	Is the projector's lamp on?		
		The projector's input source isn't switched to MIU.	Is the projector switched to MIU?		
Wireless / Wired	Live Mode	The network projector that you want to connect to is not in the list of available projectors	The PC and/or projector's network settings are not configured correctly.	Check both the PC and projector's network settings. If you change the projector's settings, turn off the projector's AC power and then turn it on again. If you simply put the projector in STANDBY power mode and then turn it on again, the new settings might not take effect.	8, 13
		Weak radio signal	<ul style="list-style-type: none"> <li>✓ Bring the PC and projector closer together</li> <li>✓ Radio waves won't go through concrete and metal (steel doors, etc.)</li> </ul>		
	Cannot communicate	The Projector is not set to Live Mode	Check the mode in the projector's MIU Menu to make sure that it is in the correct mode.		24
		WPA-PSK or/and WPA2-PSK is not configure correctly in Windows 2000.	In Windows 2000, WPA-PSK and WPA2-PSK could not configure via Live Viewer 3. Use wireless configuration utility with PC or wireless adapter. Please refer the manual of your configuration utility.		
		Cannot communicate due to configure wireless / encryption settings	If there is a wireless configuration utility loaded on your PC or wireless adapter, check the configuration settings of it. Please refer the manual of your configuration utility.		
		Configuration network settings of Live Viewer may not be set correctly.	Be sure that the configuration settings of Live Viewer are correct for usage with your PC or wireless adapter.		



Problem		Likely Cause	Things to Check	Reference Page Number	
Wireless / Wired	Live Mode	The projected image is rather slow compared to that of the PC	The projector isn't capable of relaying dynamic images such as PowerPoint® animation at full speed.	Switching the priority to 'Transmission Speed' under the options menu may help to improve speed.	18
			The compression rate being used for transferring the images is too low.	Switching the priority to 'Transmission Speed' under the options menu may help to improve speed.	18
		No Image	Using Photo Gallery Slideshow in Windows Vista.	Live Viewer 3 cannot send PC screen data while using Windows Vista Photo Gallery Slideshow. Please close Photo Gallery Slideshow before using Live Viewer 3.	
		Images contain lots of interference.	The compression rate being used for transferring the images is too high.	Try setting the priority to Image Quality in the Live Viewer 3 Option menu. You may experience a drop in speed.	18
		Two cursors appear	Cursor of the PC and cursor of the projector are displayed in succession.	Turn off the cursor Emulation in the Live Viewer 3 Option Menu.	18
		No cursor appears	Some PCs may not display the cursor in when using Live Viewer 3.	Turn on the Cursor Emulation in the LiveViewer 3 Option menu.	18
		No transparency or translucency effects (Glass)	Using Live Viewer 3 with Windows Aero mode.	Live Viewer 3 does not support these features of Windows Vista Aero.	